



GUADALUPE COUNTY

Public Information

Media Contact: Carmen Davila
Public Information Officer

(830) 303-4188, Ext. 3304 | C: (830) 557-8727

Carmen.Davila@GuadalupeTX.gov

April 15, 2025

FOR IMMEDIATE RELEASE

Guadalupe County Schertz Annex will open to serve early voting

Guadalupe County, TX: Guadalupe County's highly anticipated renovation project for the Schertz Annex building at 1101 Elbel Road in Schertz is steadily progressing. Early voting begins Tuesday, April 22, through Friday, April 25, and Monday and Tuesday, April 28 and 29. Election Day is set for Saturday, May 3. While construction on the south end of the building continues, early voting will proceed without interruption to ensure a smooth process for voters.

"The county remains committed to making this highly utilized Schertz voting location accessible during the completion of the refitting of the building interior," states Precinct 3 Commissioner Michael Carpenter. "The completion of the project will reflect a significant improvement in utilization of available space and functional modernization of the facility."

The Schertz Annex will house Precinct 3 county services, including the Commissioner's office, the Constable's office, the Justice of the Peace, and the Elections Office. Additionally, the District and County Clerks' offices will improve operation efficiency and public accessibility.

This county capital project cost \$4.14 million and delivers a newly renovated facility with improved safety features, ensuring a more secure and functional environment for county officials and the public. Officials have expressed excitement about the transformation, emphasizing the necessity of these upgrades to meet the growing needs of Guadalupe County.

The renovation project is proceeding and is expected to be ready for occupancy following final inspections (and contingent on the date of furniture delivery) on Tuesday, May 27. A significant highlight of the new project is creating a new main entry, improving public access while streamlining operations within the facility. This upgraded entrance will provide a more welcoming and secure entry point, aligning with the county's commitment to better serve while enhancing safety for residents and staff.

Residents can find updates on the renovation project updates on the county website, [GuadalupeTX.gov](https://www.GuadalupeTX.gov). Information about elections in Guadalupe County is also available on the county webpage.

While construction is underway at the Schertz Annex building, services are temporarily relocated to the Guadalupe County Service Center located at 1052 FM 78 in Schertz.

Schertz Annex Project Details:

Address: Guadalupe County Schertz Annex Building, 1101 Elbel Road, between Roy Richard Drive and the post office.

Renovation Project: Planning details began in Fall 2023

Architect: Debra J. Dockery Architecture, P.C.

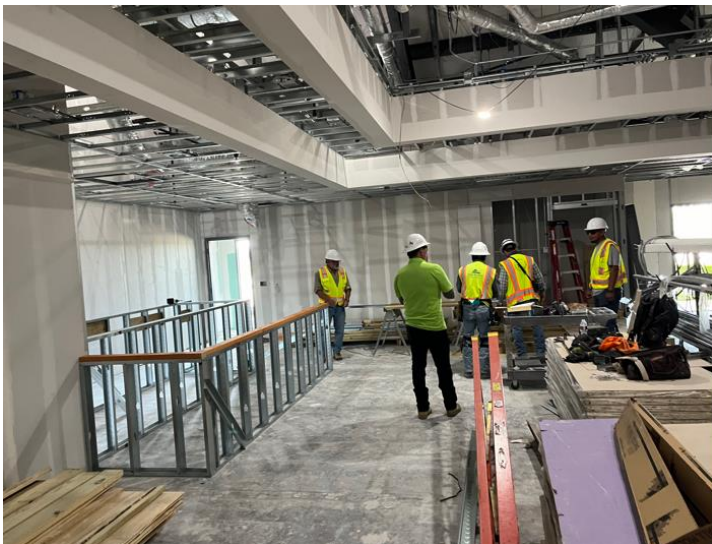
Contractor: Tejas Premier Building Contractor Inc.

Capital Budget Project Budget: \$4.14 M

Contact: Commissioner Michael Carpenter, Pct. 3; O: (830) 303-8857, Ext. 3 / C: (210) 452-8003



Elections Office counter space is prepared for voters.



Justice of the Peace, Precinct 3, courtroom under renovation.

###